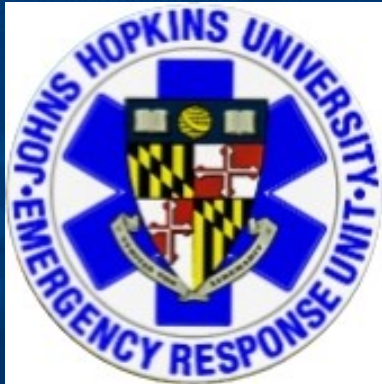




JOHNS HOPKINS
LIFELINE

Ground And Air Medical Transportation Services

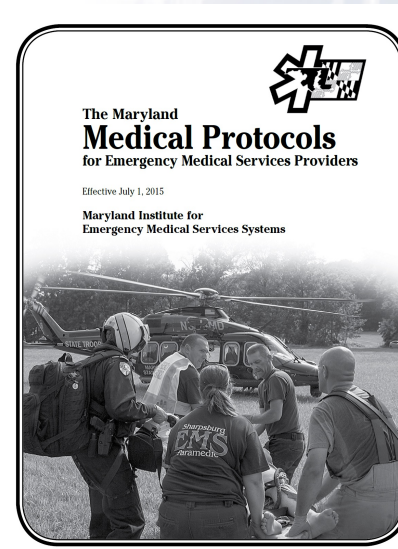
MIEMSS Optional Supplemental Protocols



JOHNS HOPKINS
M E D I C I N E

Epinephrine 1:1,000 Optional Supplemental Program

- Key Points as listed in the Protocols effective July 1, 2016.



Epinephrine 1:1,000

Optional Supplemental Program

- Indications for Adult administration
- Moderate to severe allergic reaction with respiratory distress or mild allergic reaction with history of life-threatening allergic reaction
 - Signs and symptoms include
 - Moderate - Hives, Mild Wheezing
 - Severe- Diffuse wheezing, pharyngeal swelling, dyspnea, hypoperfusion, abnormal skin color, stridor, and/or loss of peripheral pulses
- Medical Consultation is required for the Administration of Epinephrine to Adult Asthma Patients.

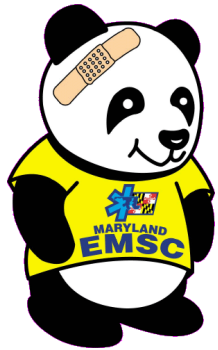


Epinephrine 1:1,000 Optional Supplemental Program



Epinephrine 1:1,000

Optional Supplemental Program



- Pediatric Epinephrine administration indications.
- Moderate to severe allergic reaction with respiratory distress or mild allergic reaction with history of life-threatening allergic reaction, and severe asthma
- Signs and symptoms include
 - Moderate - Hives, Mild Wheezing
 - Severe- Diffuse wheezing, pharyngeal swelling, dyspnea, hypoperfusion, abnormal skin color, stridor, and/or loss of peripheral pulses

Epinephrine 1:1,000 Optional Supplemental Program



Epinephrine 1:1,000

Optional Supplemental Program

- Adverse Effects of Administration
 - Tachycardia/Palpitations
 - Angina
 - Headache
 - Nausea/Vomiting
 - Dizziness
 - Hypertension
 - Nervousness/Anxiety
 - Tremors

Epinephrine 1:1,000

Optional Supplemental Program

- Precautions
 - Unless in severe allergic reaction or severe asthma, Medical Consultation must be obtained before administering to
 - Pregnant patients
 - Cardiac patients
 - Adult Asthma patients

Epinephrine 1:1,000

Optional Supplemental Program

- No Contraindications in the presence of Anaphylaxis.
- Anaphylaxis defined- Diffuse wheezing, pharyngeal swelling, dyspnea, hypo-perfusion, abnormal skin color, stridor, and or loss of peripheral pulses

Epinephrine 1:1,000

Optional Supplemental Program

Epinephrine to be supplied in Vial or Ampule form: 1 mg = 1 ml of Epinephrine 1:1,000



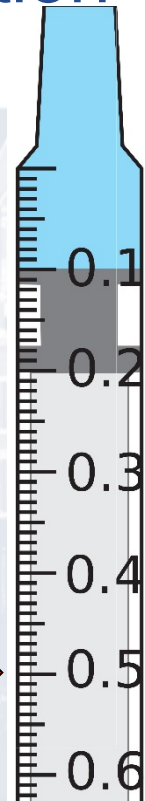
Epinephrine 1:1,000

Optional Supplemental Program

- Dosing for Intramuscular (IM) Administration
 - 5 years of Age and Older
 - 0.5 mg = 0.5 ml of Epinephrine 1:1,000



22 ga Needle
1 inch long



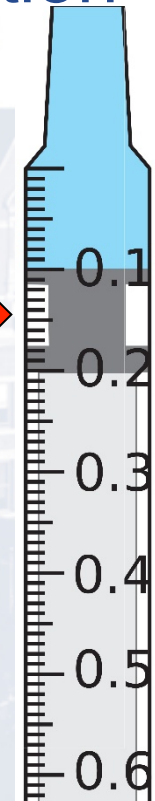
Epinephrine 1:1,000

Optional Supplemental Program

- Dosing for Intramuscular (IM) Administration
 - Pediatric patients less than 5 years of age
 - $0.15 \text{ mg} = 0.15 \text{ ml}$ Epinephrine 1: 1,000



22 ga Needle
1 inch long



Epinephrine 1:1,000 Optional Supplemental Program



Additional Doses may be administered with
medical Consultation.

Epinephrine 1:1,000 Optional Supplemental Program



Epinephrine 1:1,000

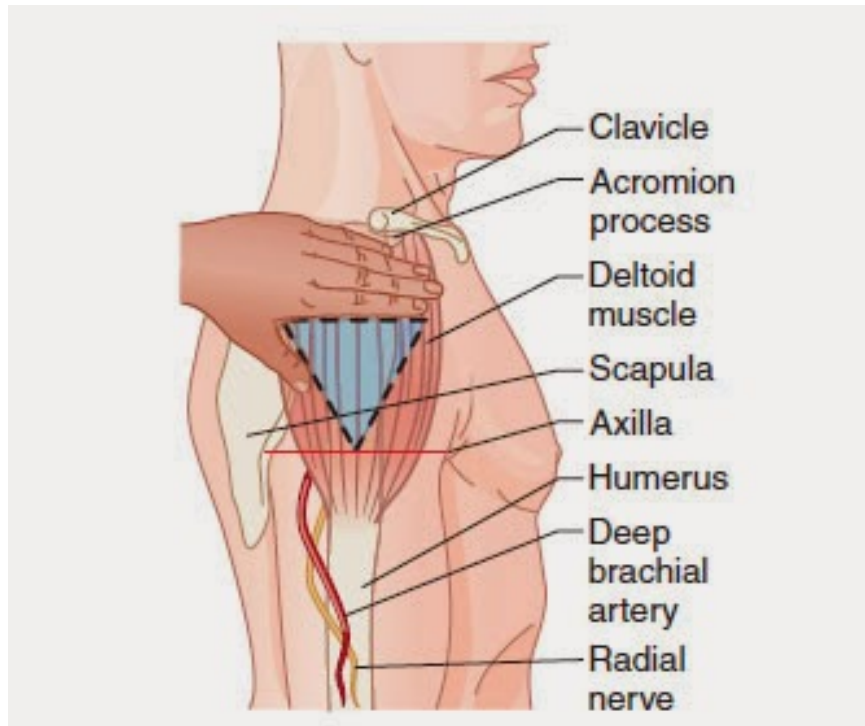
Optional Supplemental Program

- Site Preparation
 - Expose area of Injection to bare skin.
 - Find landmarks for injection site
 - Clean area with alcohol swab in expanding circular motion

Epinephrine 1:1,000

Optional Supplemental Program

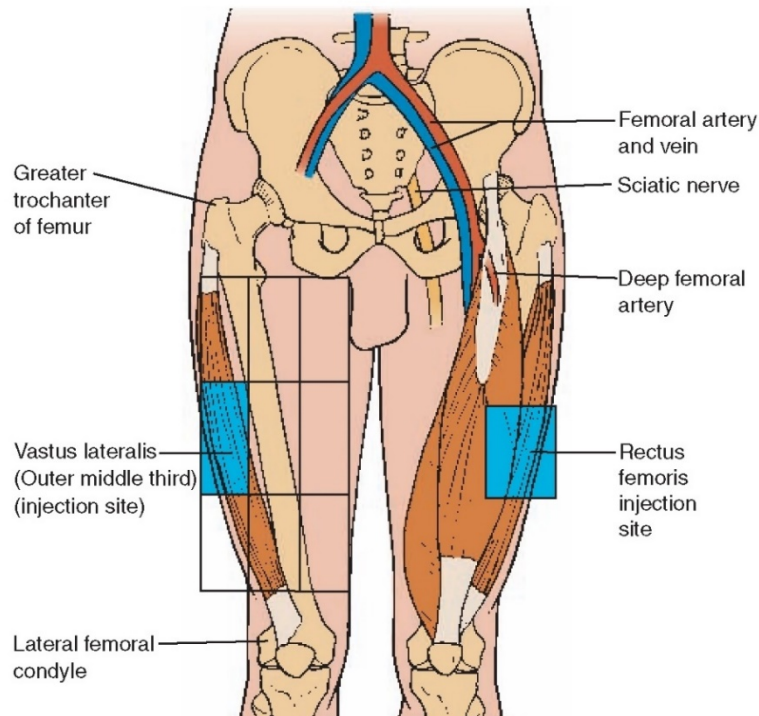
- Primary Intra-muscular injection site.



Epinephrine 1:1,000

Optional Supplemental Program

- Alternate Intra-muscular injection site.



Epinephrine 1:1,000

Optional Supplemental Program

- Post administration
 - Apply direct pressure with gauze pad rubbing site through pad for 30 seconds
 - Apply taped gauze pad or Band-Aid to site

Epinephrine 1:1,000

Optional Supplemental Program

- Important steps to remember
 - Indications, contraindications, precautions
 - Correct dose and drawing up
 - Site selection
 - Site Preparation
 - Post site care